

## HORIZON 15



### FEATURES

The HORIZON family is designed for general applications as well as task or mirror lighting and comes in 15, 26, 34, and 105mm heights. An architectural luminaire, HORIZON uses a rectangle diffuser which is designed to be seen and provides 180 degree illumination.

HORIZON 15 is designed for versatility, with two styles of end cap and the option to either corner or surface mount. It is suitable for both residential and commercial lighting projects.

- W18.5mm x H15.3mm
- Rectangle frosted acrylic diffuser
- Anodised aluminium, black or white powder-coat finishes
- Custom colour finishes available
- Screw-fix or corner mount with clip
- Corner or surface mount

### ACCESSORIES

Complete profile systems include all accessories required for the specific application and installation. An accessories data sheet is available.

### TECHNICAL

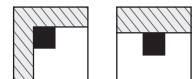
Installation guides, CAD drawing files and IES files are available.



COLOURS AVAILABLE

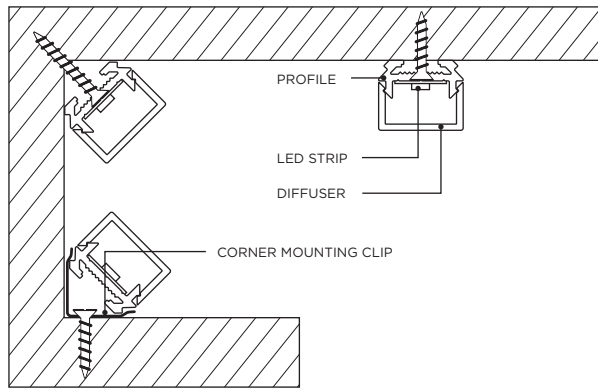


WIDE ANGLE

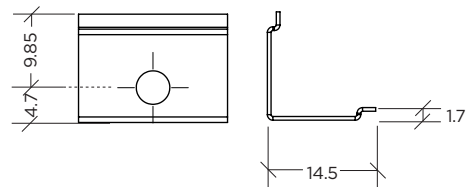
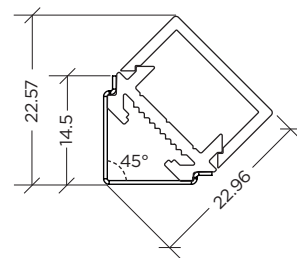
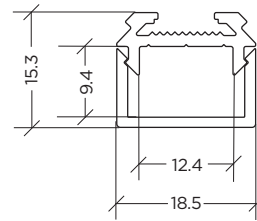


## INSTALLATION

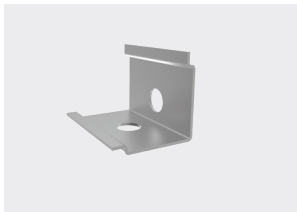
Corner mounted with screw or clip, surface mounted with screw



## DIMENSIONS

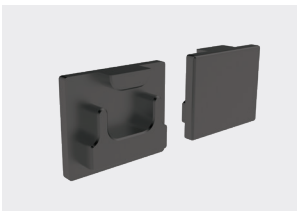


## ACCESSORIES

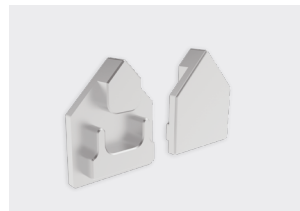


CORNER MOUNTING CLIP

## END CAPS



SURFACE END CAPS



CORNER END CAPS