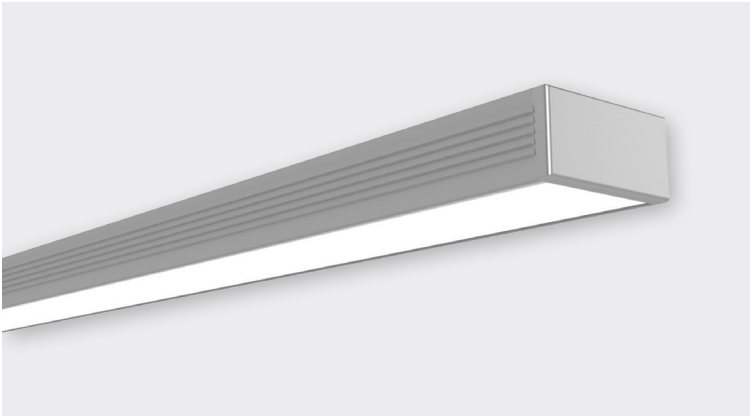


## GHOST 10



### FEATURES

The GHOST family is designed for recessed applications such as cabinetry. It has a flat diffuser and comes in depth options of 10 and 14mm. The trimless and recessed design integrates seamlessly within a professional installation. The clean lines and minimalist design allow the illumination to be the main event.

GHOST 10, with an overall height of just 10mm, is perfect when space is limited. Its slim design makes it ideal for residential and commercial lighting projects.

- W20mm × H10mm
- Opal polycarbonate diffuser
- Anodised aluminium
- Recess via friction-fit mounting system

### ACCESSORIES

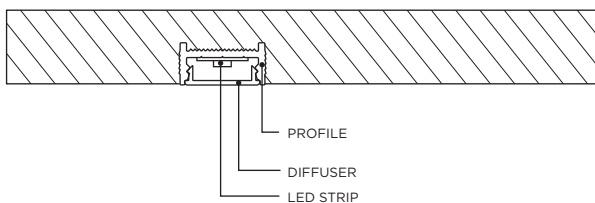
Complete profile systems include all accessories required for the specific application and installation. An accessories data sheet is available.

### TECHNICAL

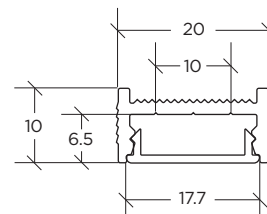
Installation guides, CAD drawing files and IES files are available.

### INSTALLATION

Recessed - requires rebate groove of 20.3mm wide



### DIMENSIONS



COLOURS AVAILABLE



DIRECT

