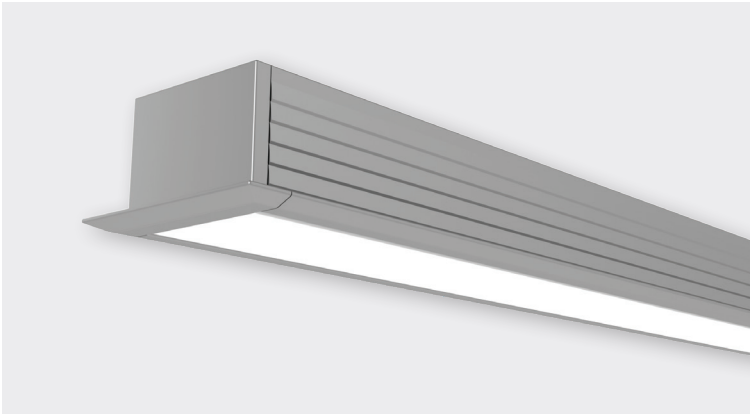
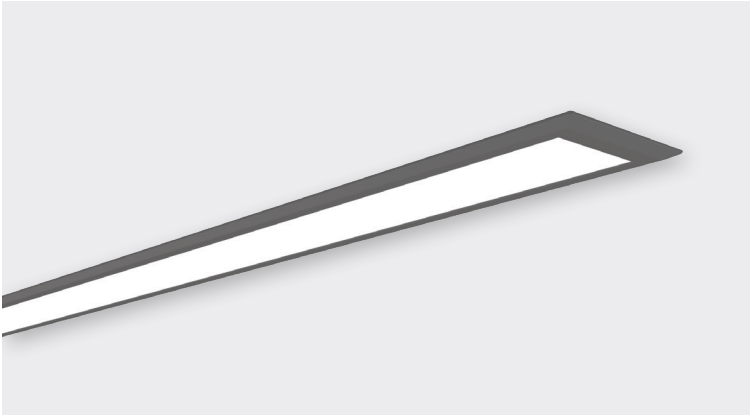


FLARE 15



FEATURES

The FLARE family is designed for recessed applications. It has a flat diffuser and comes in depth options of 10, 15 and 33mm. The stylish trim allows for a forgiving installation ensuring a clean finish.

FLARE 15 is a classic profile, providing dot-free light without the distractions.

Installation is via a friction-fit mounting system which reduces standard depth requirements and eliminates the need for additional fixings.

- W27mm x H15.5mm
- Opal or clear polycarbonate diffuser
- Anodised aluminium, black or white powder-coat finishes
- Custom colour finishes available
- Recess via friction-fit mounting system

ACCESSORIES

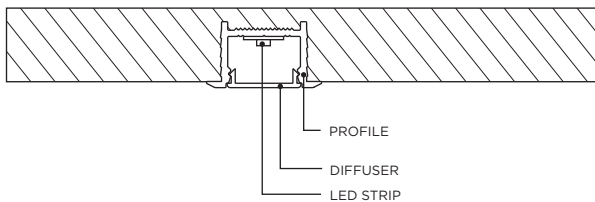
Complete profile systems include all accessories required for the specific application and installation. An accessories data sheet is available.

TECHNICAL

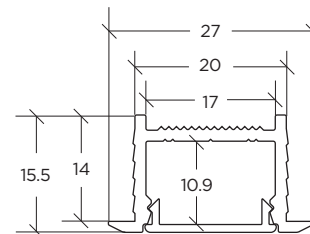
Installation guides, CAD drawing files and IES files are available.

INSTALLATION

Recessed - requires rebate groove of 20.3mm wide



DIMENSIONS



COLOURS AVAILABLE



DIRECT

