

## ECLIPSE 24



### FEATURES

ECLIPSE 24 is an inconspicuous lighting profile specifically designed to be camouflaged when not in use. When unpowered ECLIPSE 24 has the appearance of a solid black profile or stylish trim, if recessed.

When powered up the diffuser comes to life to provide a striking line of light. ECLIPSE 24 can be suspended, surface mounted, or recessed.

Light transmission through the black diffuser is about 20-30%, therefore, higher wattage LED ribbon is recommended. For a brilliant white result use 5000-6000K LED ribbon, or alternatively, 3000K and 4000K options are also available.

- W18.5mm x H24mm
- Dark to light PMMA diffuser
- Black powder-coat finish
- Custom colour finishes available
- Suspend, surface mount, or recess

### ACCESSORIES

Complete profile systems include all accessories required for the specific application and installation. An accessories data sheet is available.



COLOURS AVAILABLE

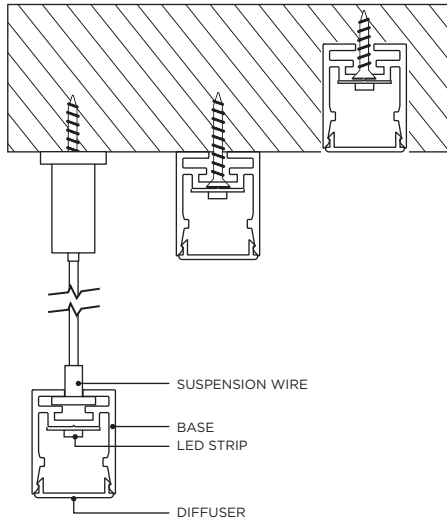


DIRECT

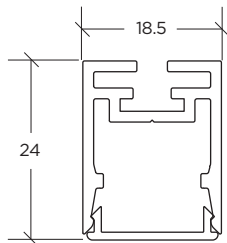


## INSTALLATION

Suspended, Surface Mount, Recessed



## DIMENSIONS



## GENERAL ACCESSORIES



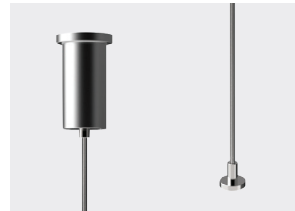
**SURFACE MOUNT CABLE BASE**  
Ø80 × H22mm

Available in anodised aluminium, black or white



**RECESSED CABLE BASE**  
Ø80 × H20mm (3mm exposed)

Available in anodised aluminium, black or white

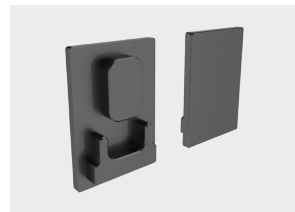


**SUSPENSION WIRE WITH BASE**  
4 METRE CABLE

Available in anodised aluminium, black or white. Max. distance of 2m between suspension wires.

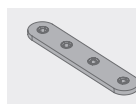


**CLEAR FLEX CABLE**

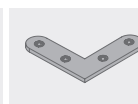


**END CAPS**

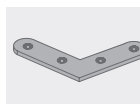
## JOINER ACCESSORIES



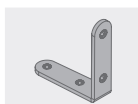
**STRAIGHT**



**90° CORNER**



**120° CORNER**



**VERTICAL TO HORIZONTAL**